



# Catalan



# ALVA





Catalan



ALVA

[alvasurfaces.com](http://alvasurfaces.com)

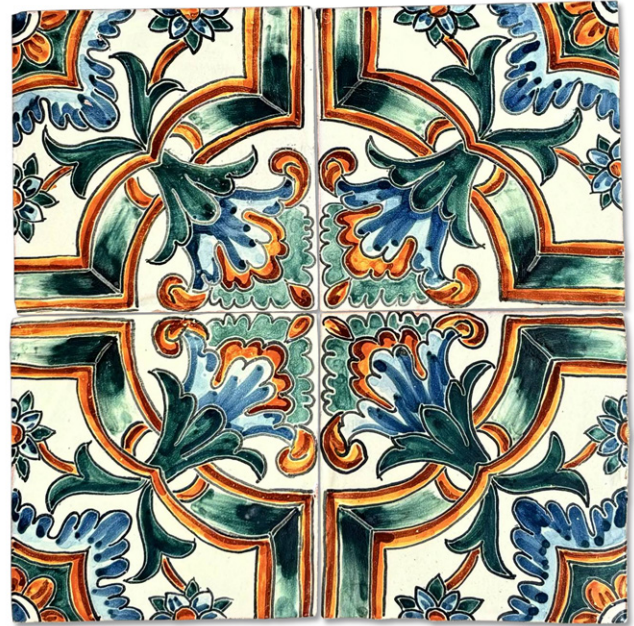




# Catalan Designs



**CT-1** LaParra



**CT-2** Quatrefoil



**CT-3** Jardin



**CT-3** Liston





# Catalan Designs



**CT-5** Pulma



**CT-7** El Compas



**CT-9** Otomi





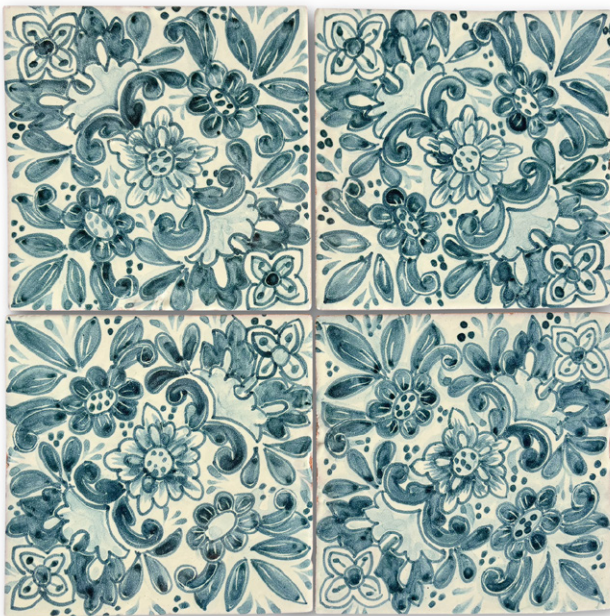
# Catalan Designs



**CT-6** Las Flores En Blau



**CT-15** Quatrefoil En Blau



**CT-16** Jardin En Blau



**CT-20** Otomi En Blau



# Catalan Colors and Shapes



**Yellow**



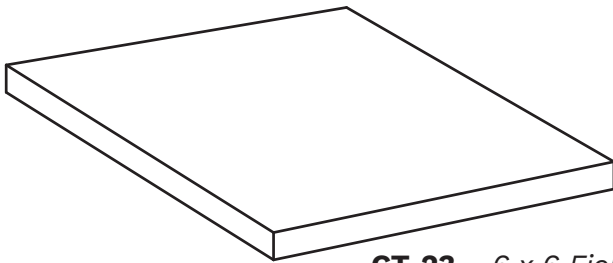
**White**



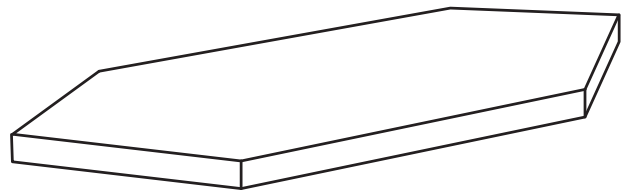
**Green**



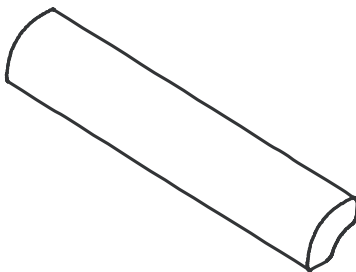
**Blue**



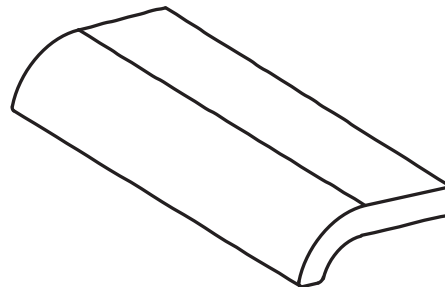
**CT-23** – 6 x 6 *Field*



**CT-24** – 3 x 9 *Navette*



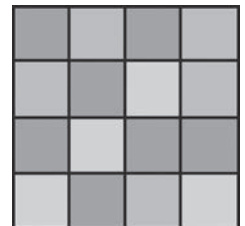
**CT-26** – 1 ½ x 6 *Quarter-Round*



**CT-25** – 2 ¼ x 6 *Mudcap*

## Glaze Variation

Catalan decorative and field tile are hand-brushed and will display moderate variation. Variation is intrinsic to the beauty and warmth of handmade ceramic surfaces and should be expected.







# Catalan

Catalan tile is an authentic hand-painted tile with a lineage that stretches unbroken to its Spanish roots. The Rajoles style was born in Talavera de la Reina in Spain, and came to Mexico during the Colonial Period of the 16th century, where it has thrived ever since. Every tile tells its story of generational artistry, passed down through families who have preserved these classic techniques.

Each tile is meticulously crafted following time-honored techniques. Our artisans carefully roll out and cut the red clay by hand. Each piece is hand-glazed using the traditional Majolica tin glazing method, where colored pigments are painted over a white glaze base.

Catalan tile is available in 11 colorways and has field and trim tile in four hand-brushed coordinating colors.

## Sampling

Due to the limitations of photography, we strongly recommend viewing physical samples of the design and colorway prior to ordering. As Catalan is hand-glazed, every batch will show the hand of the individual artist and will be unique.

## Lead Time

Catalan is made to order for you in small batches and currently has a lead time of 8 to 10 weeks (FOB San Antonio, Texas). If your project is very large, with hundreds or thousands of decorated tile, it will take longer, and we will estimate lead-time upon ordering.

## Usage

Catalan is suitable for interior wall applications, including kitchen backsplashes and shower walls. We do not recommend its use in steam showers.

## Installation

Catalan is installed as you would install any tile and does not require special materials or tools. We recommend consulting the current TCNA Tile Installation handbook for the proper installation method for your application.

## Maintenance and Care

Catalan may be cleaned with any non-abrasive household hard surface cleaning products. Acidic or caustic cleaners are not recommended.

